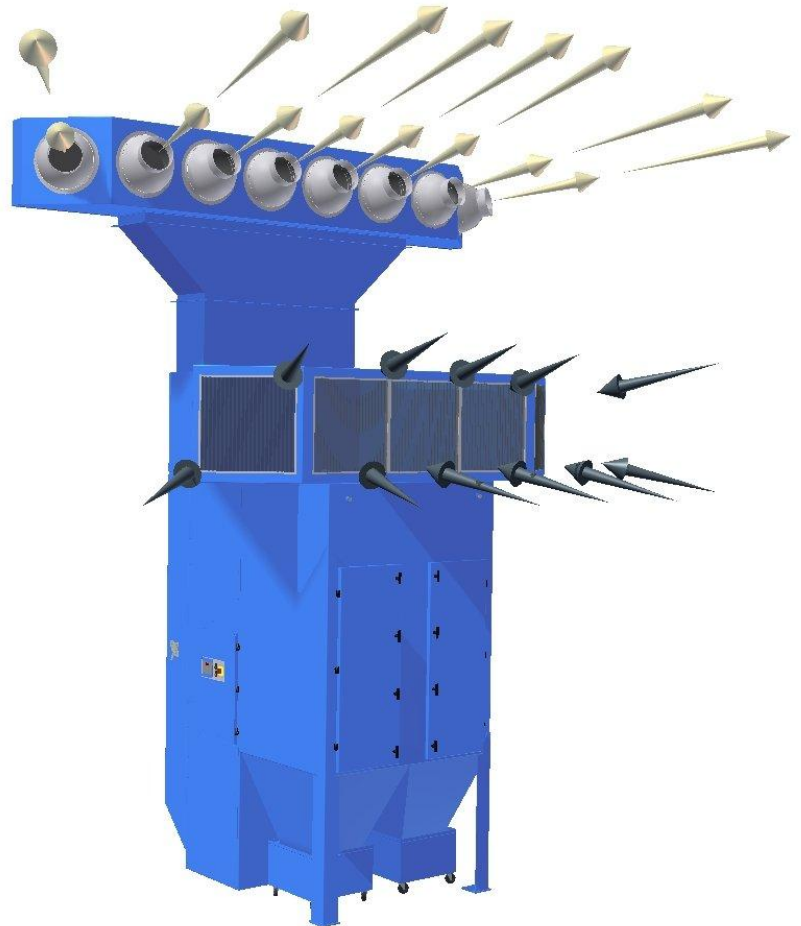




- ✓ High Performance Ambient Air Recirculation
- ✓ Eliminates the need for Expensive Ductwork
- ✓ Cost Effective
- ✓ Compact
- ✓ Plug and Play
- ✓ Available for the Torit® PowerCore® TG 8 and the TG 12
- ✓ Up to 12,000 cfm capacity
- ✓ Modular Components for Flexible Installation
- ✓ Ideal for Plants with Overhead Crane Obstructions



Conquest Equipment Corporation

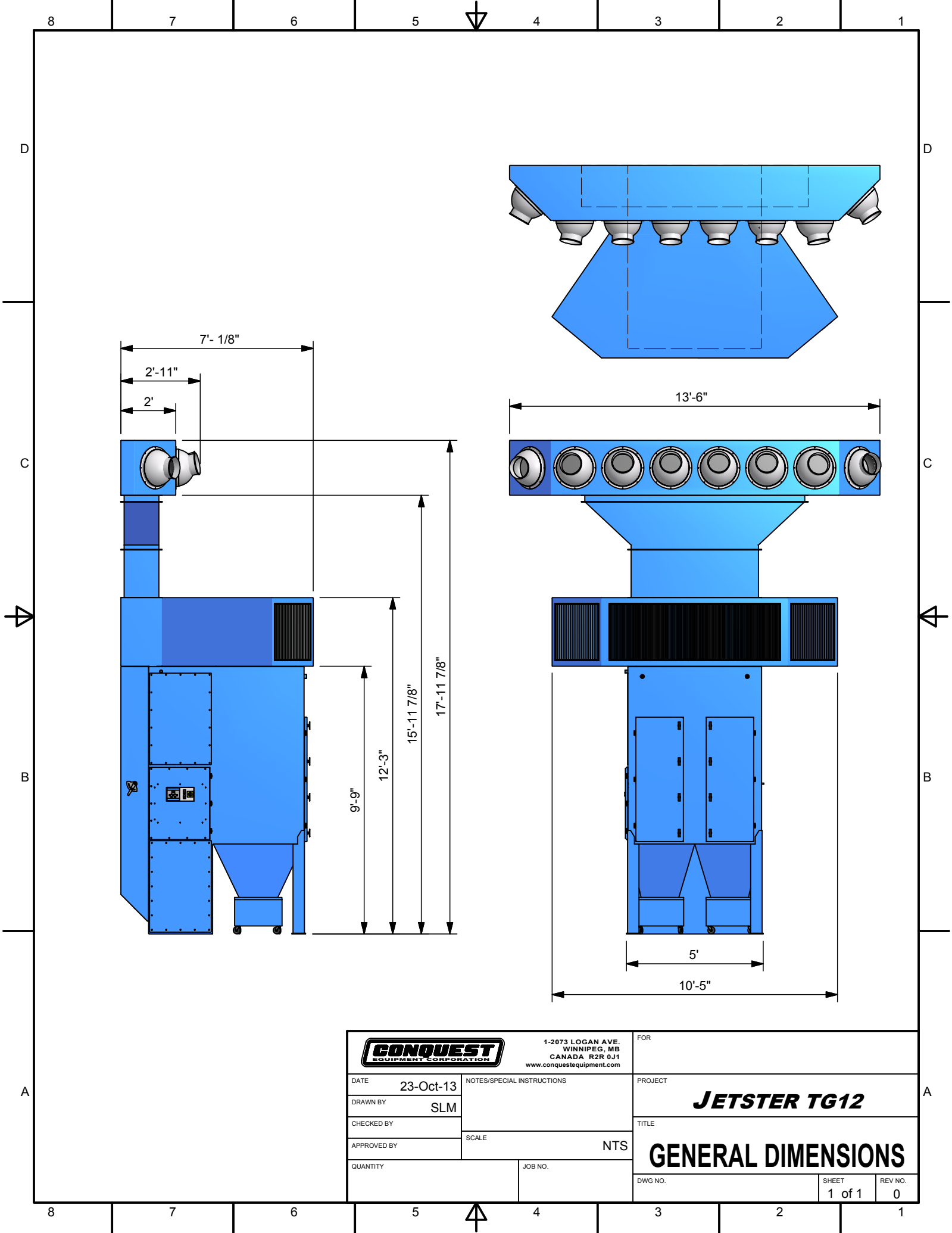
1-2073 Logan Avenue

Winnipeg, MB, Canada, R2R 0J1

TF 800-786-6606

www.conquestequipment.com





CONQUEST EQUIPMENT CORPORATION		1-2073 LOGAN AVE. WINNIPEG, MB CANADA R2R 0J1 www.conquestequipment.com		FOR	
DATE 23-Oct-13		NOTES/SPECIAL INSTRUCTIONS		PROJECT JETSTER TG12	
DRAWN BY SLM				TITLE GENERAL DIMENSIONS	
CHECKED BY				DWG NO.	
APPROVED BY				SHEET 1 of 1	
QUANTITY		JOB NO.		REV NO. 0	